









What a start to the summer season! We introduced the Falcon range expecting many of you to be out in the garden, now that British summer time has begun. But instead you surprised us again with your enthusiasm. Thanks for all your great comments and the many new members who joined our 'band of enthusiast puzzlers'!

THE OFFICIAL UK PUZZLE CLUB

READ ABOUT

-  News & Views
-  Meet the team.
-  Previews & Coming soon
-  Reader's letters
-  Official Puzzle selected Jigsaws
-  Winning Ways

May already!

This year is just racing by. It must be all those orders keeping us busy busy! In fact Margaret has let me (Jig) have another stab at writing our main articles.



May I first say thank you for all the kind words I received after my first article (hope there'll be many more in the future)... Many of you have asked for a little more info on the club-how we started and our plans for the future.

The Club itself started in October 2005 when Margaret saw how few phone based Jigsaw Puzzle Club's there were out there. Having run a Jigsaw Puzzle Club before she had built up a picture of what members wanted from a club; The ability to buy good quality jigsaws from the world's best manufacturers, human contact with a dedicated phone line, variety, competitive price & friendly service and a user friendly website. Finally the members wanted a regular newsletter with a wide range of interesting information and manufacturer news.

After some months putting these things into place, approaching all of the major manufacturers, the club was taking shape. Margaret wanted to have some Official Puzzle Club exclusive puzzles so the search extended to various artists whose artwork could be turned into our own limited editions. One of the most helpful artists was Kevin Walsh, a talented artist who gave the club exceptional help. We were grateful for all the support we were given and know that without it, we would not have grown as quickly. We started our initial mail-out inviting 'puzzle minded' people to join our community and the replies came flooding in so to keep the ball rolling, we put adverts in multiple magazines and surprise surprise, once again we were inundated with positive responses. So many 'puzzlers' out there!

It really seemed like we had created a really good club, with more and more members joining on a daily basis. In fact by the end of our first year we had already managed to get up to 1196 members, far exceeding our expectations (not that we were complaining, it was nice to see our community grow.)

Although our membership now sits at almost 3,500 the basic principles of the club haven't changed. We are still a fairly small operation, with a small staff, a large storage facility and a lot of enthusiasm. You will find Margaret happily catching up with our members who often just ring for a chat Margaret describes it as 'Like a family, everyone different but equally important.' She continues 'Some people like to call us up, some prefer to write in and a few even like to contact us through the website, however every order is treated with the same level of urgency and our members will always be kept up to date should their order be delayed.'

The Puzzle club now deals with 19 Manufacturers, stocks over 2000 puzzles and with your recommendations we have a natural growth. We don't want to be the biggest in the world - just the place you come to first! To satisfy all your jigsaw needs. Our website has been redesigned too, so if you have access to the internet, you can now view our latest offerings on line, but we're still at the end of the 'phone and as far as Margaret is concerned will never be 'just on line'. Talking of orders, I had better go and make Margaret a cup of coffee and get back to packing up your puzzles. Now you know how the Puzzle club works and it's your turn to let us know what we are doing right and also what you would like to see added to the club because after all, this is your club too, and we are here to help. Happy puzzling folks, I look forward to hearing from you Jig.

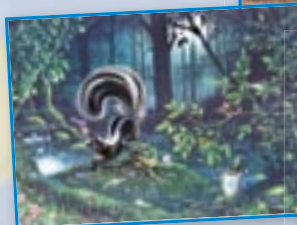
OPC Limited editions



OPC-07 Paris 1



OPC-08 Paris 2



OPC-06 Drunk as a Skunk



OPC-05 **** as a Newt



OPC-03 Sailing Boats

NEWS & VIEWS

Readers Letters

Our Star Letter

Please find enclosed a cheque for my jigsaws. The actual price was less but having just received the newsletter saying that prices may be rounded up I thought that I'd send a little extra to help start the 'Charity box'. Over the years, I've held coffee days on or near to Kathryn's anniversary. As I mentioned on the 'phone, she was killed twenty-one years ago, (just five weeks before her 14th birthday) on a jeep safari into the mountains of Gran Canaria. Their jeep went over the mountainside, resulting in two fatalities and several people being badly injured. We tell people in case they are thinking of going on these trips, to be very careful as this has happened to others too. We have supported many charities, but have decided now to support our local hospice as they do such wonderful work. In view of this, I wondered if you might have a local 'pet' charity, animal sanctuary in mind. As you do the hard work for us I just wondered if that may be feasible? On newsletter no.43 you feature a shaped butterfly jigsaw. I made this up a number of years ago and it is mounted and framed. It is really lovely. I have others hanging on our walls. They often prove a talking point.

Ann Buckley-Cannock.

Sincere thanks for the additional funds and apologies for not copying the whole of your letter and the many suggestions therein. We are going to donate to The PDSA this year and also give a donation to The Phoenix Pet and Wildlife Sanctuary in Martock. We are hopeful of keeping this going over the next few years and will be pleased to choose a worthy support from the many 'smaller' organisations, who would appreciate the funds. Many thanks for all your suggestions thus far. We hope to have an extensive list to choose from for 2010.

My goodness you have given me a dilemma! As you can see above, we run a small registered animal sanctuary and so I was delighted to see your suggestion for donating the rounded up pennies to an animal cause. I am not putting us forward or anything, although funding has been hard to raise the last year or so. It looks mean to knock off the extra pence, but if I pay them, I am providing funds for another cause! I think on balance I will pay the extra pennies as it will go to a cause we are part of. If I could make one request? Please do not choose one of the major causes; these get so much money, while the smaller ones constantly struggle. I know how much it would mean to one of these to receive such a donation. I am delighted to see you offering new puzzles from Dutch artist Jan Van Haastereen. I love every one of his puzzles although there are some I haven't been able to track down. Maybe I can find them now: I always enjoy finding his famous hidden sharks fin.

Jeannie Judd-Martock.

(The Phoenix Pet & Wildlife Sanctuary)

www.phoenixpaws.org.uk

Hope the above will help you with your struggles. Probably not a fortune but will be donated with pleasure from all your fellow members at the end of 2009. As for JVH we should be able to find your missing jigsaws.

We usually offer our star letter writer a free jigsaw, but have decided this month to offer you both one. Do let us know which you would like.

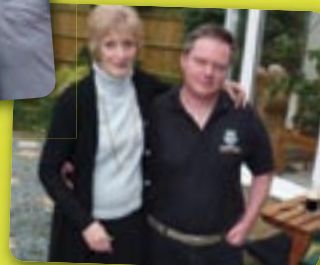
JIG'S CORNER QUESTIONS, INFORMATION & MORE

Meet the Team!

You'll probably only ever speak to Margaret, unless we can get her away from the phone but here we all are!



Jig, Andy and Andrew



Margaret with Andy

Helen & Mick Just joined the team, there picture will be in a later newsletter)



Lou-our little Helper with 'Jig'

And lastly Kerry, our accountant, who looks after the Company books and is never around when you have a camera in your hand.



WINNING WAYS

Issue 42

It is very unusual to have the same winner in consecutive competitions, but well done Jacqueline Howe-Doddington with a remarkable 227 words (not counting plurals). Equally well done Miss C Abbott-Axminster who didn't make 227 but put in the second biggest entry. (You both beat jig) and we have a very unusual puzzle prize on its way to you both



AND OUR WINNING WAYS COMPETITION FOR ISSUE 43

Clementoni Jigsaws are made in which country? Winning entry will receive a 1000pc Clementoni Jigsaw of their choice.

Answers before 30th May.

PREVIEWS

New Clementoni Jigsaws – available now. And many more coming soon.

Whilst every effort will be made to ensure your choice is available, deliveries are not as frequent as our UK based factories so it may take a little longer to fulfil your order.

High Quality 1500pc Selection @ £15.00



31957 Florence - 1500pc

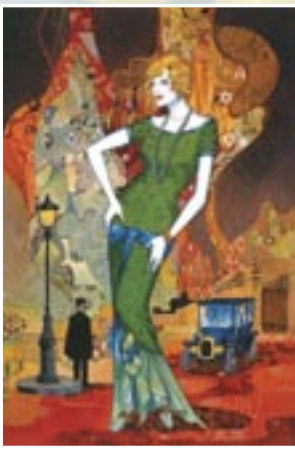


31965 Indian Princess - 1500pc



31971 Jaguar - 1500pc

Art Deco Collection @ £13.00



39077 Evening in Town - 1000pc



39079 City Life - 1000pc



39078 Madame under the Sun - 1000pc



39095 Paris Adventure - 1000pc

Disney Art Collection @ £13.00



39080 Disney Monna Daisy



39081 Disney the Hung



39082 The Creation of Donald



39083 Disney Angels

HIGH Colour collection @ £13.00



39085 Beauty of Brocade - 1000pc



39090 Street Music - 1000pc

2009 Christmas Limited Edition 1000pc Jigsaws.

Place on reserve to secure. Delivery end July/beginning August.



Ravensburger Santa's Christmas Supper



Gibsons Christmas Cheer

OFFICIAL PUZZLE CLUB SELECTED JIGSAWS

Salzburg
1000pc Jigsaw from
Clementoni 2009 collection.
Available at £10.00



Peaceful Reflections
from Famous artist J Lee,
beautiful serene image
1000pc Jigsaw at £10.00

Woman on a Seascape
1000pc jigsaw from
Clementoni's High
Colour collection
available at £13.00

To order **Salzburg** and/or **Peaceful Reflections** and/or **Woman on a Seascape** or any of the other products featured in this issue complete the Order form below and send with your remittance payable to: The Official UK Puzzle Club **The Official UK Puzzle Club, PO Box 3351, Wokingham, Berkshire, RG41 2WE.** (If you don't want to spoil your newsletter, simply put your request on paper)

Code No/Description	Price	Quantity	Value
39085-Salzburg-1000pc	10.00		
39089-Woman on Seascape-1000pc	13.00		
14117-Peaceful Reflections-1000pc	10.00		
1500pc: Ref No:	15.00		
1000pc: Art Deco-Ref:	13.00		
1000pc: Disney Art-Ref:	13.00		
1000pc: High Colour-Ref:	13.00		
OPC-Limited Editions-Ref:	10.00		
Ref:			
Ref:			
Ref:			
Gibson-Christmas Cheer-LE 2009	reserve		
Ravensburger-Santa's Christmas Supper 1000pc LE 2009	reserve		
Postage & Packing			£3.50
Total Value			

Gold Members - Please deduct 10% from above prices, exd p&p

Name _____

Address _____

Postcode _____

Telephone _____

Email _____

Membership No. _____

I enclose cheque/postal order for value £ _____ made payable to the Official UK Puzzle Club
 Please debit my Credit/Debit card for £ _____ Card Type Master Card Visa Maestro/Solo

*Card No: _____

Issue No: _____

Valid From: _____

Signature: _____

Please allow up to 28 days for delivery

Security Code : _____

Expiry Date : _____

*Please attach cardholder's details if different from above

Contact us:

Official UK Puzzle Club, PO Box 3351, Wokingham, Berks RG41 2WE Telephone: 0118 978 9599 Fax: 0118 979 5077

Email: mb@jigsaw-puzzle-club.co.uk or sales@whispers.co.uk Web Address: www.jigsaw-puzzle-club.co.uk

Barneys Newsbox holds one of the largest puzzle selections available and caters for ALL sizes. Tel: 01539 435627

Another great website with lots of manufacturers we don't yet deal with available through the club or direct

www.jigsawpuzzlesdirect.co.uk,

For Trevor Mitchells Fine Art originals and prints visit:

www.nostalgicart.co.uk or telephone Trevor on 01274 589053

General Sales: Tel: 0118 978 9599

Helpline: retailers in your area, and general membership enquiries. Tel: 0118 978 9599